



CASE STUDY

Feature 17

Project Management
Marketing Hoardings
Window Vinyls
Digital Wallpaper
Illuminated Signage
Car Park Graphics
Laser Cut Lettering

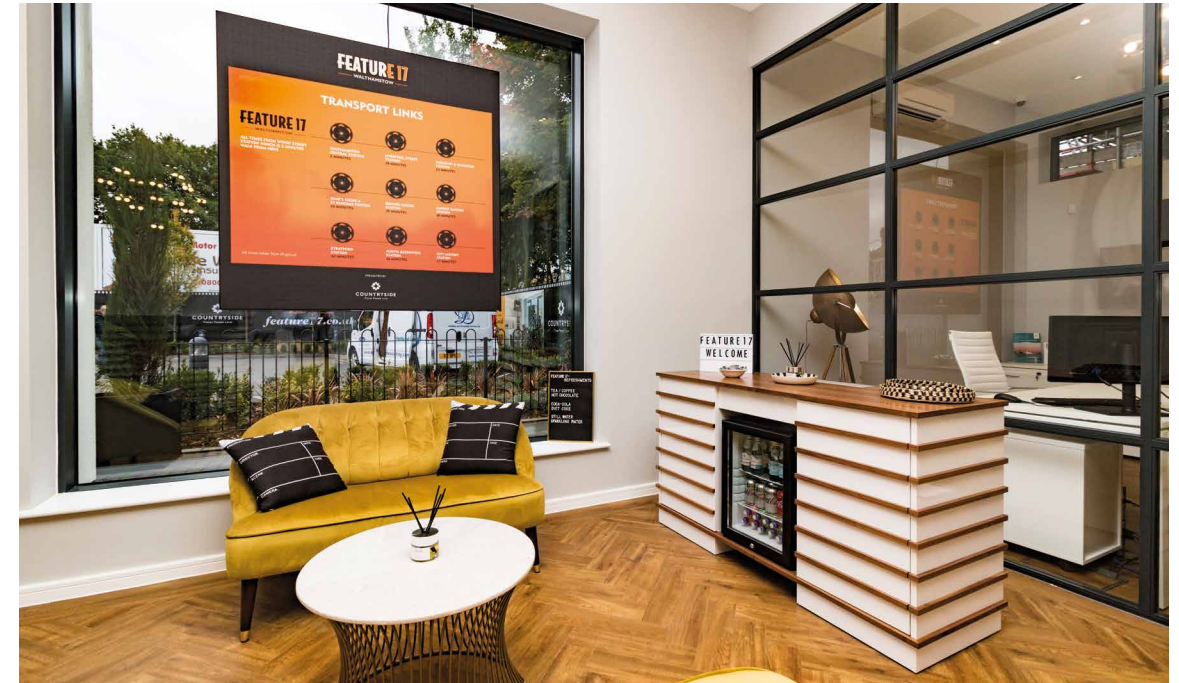
Who are Countryside Properties

Countryside Properties are a developer of new houses and apartments operating in London and the South East of England.

The Development

Feature 17 is a brand new development in the heart of Walthamstow offering contemporary sophistication with a touch of old-school glamour.

200sq metres of bespoke wallpaper



What we did

Walthamstow has always been something of a creative hub. From the initial installation of over 250 hoarding panels to the creation of the stylish show suite featuring bespoke wallpaper, stretch fabric frames, glazed walls and even car park graphics, we helped set the scene for a great show by Countryside Properties.



COUNTRYSIDE
Places People Love

FEATURE 17

A WARM
WELCOME

FEATURE 17
VALTIO

↑
PICTURE
YOURSELF
HERE



over 250 marketing
hoarding panels
printed and installed

install complete...
let the show begin



Please get in touch to find out how N2 can help you get the most from your development marketing.



01992 440333
www.n2group.co.uk